

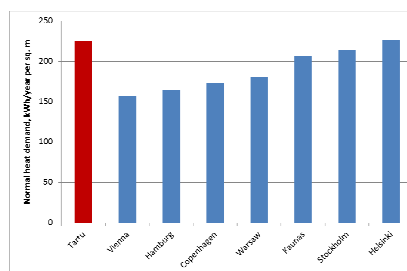
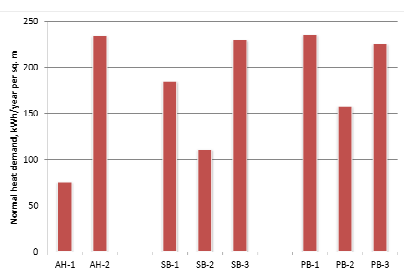
Tartu Research Project

Overview:

- Finding the needed brick buildings.
- Collecting the data about previous years consumed energies (heat, water, electricity).
- Analyzing the energy consumptions and give a short overview for each building.
- According to the results of analyzes, choose two buildings for a detail research.
- Final report.

Finding the Needed Buildings:Collecting the Data:

- **Groups of building under research:**
 - Apartment houses (5...7 buildings)
 - School-buildings (6 buildings)
 - Public buildings (6...8 buildings)
- **Monthly Consumed energies for past 3 years of:**
 - Heating
 - Electrical
 - Tap-water

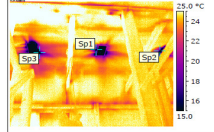


Co₂olBricksAnalyzing the Buildings in Detail:

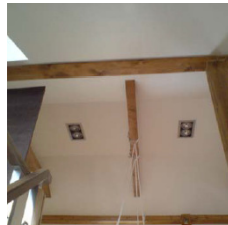
- Air tightness (leakage) test
- Thermographical analyze
- Measuring indoor climate (approx. 1...1,5 years)
 - Temperature
 - Humidity
 - CO₂- level
- Measuring technical systems
- More....


www.co2olbricks.eu
Co₂olBricks
www.co2olbricks.eu
Co₂olBricks

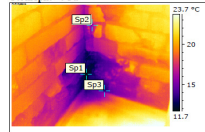
Termopilt ±0 Pa



IR Text Comment	Value
Sisitemperatuur, +°C	24.2
Välisitemperatuur, +°C	3.1
Label	Value
Sp1	14.1 °C
Sp2	15.6 °C
Sp3	13.5 °C
fRsi1	0.52
fRsi2	0.59
fRsi3	0.49


www.co2olbricks.eu
Co₂olBricks

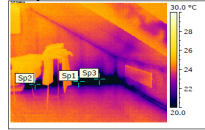
Termopilt ±0 Pa



IR Text Comment	Value
Sisitemperatuur, +°C	26.1
Välisitemperatuur, +°C	2.9
Label	Value
Sp1	11.7 °C
Sp2	15.9 °C
Sp3	13.6 °C
fRsi1	0.38
fRsi2	0.56
fRsi3	0.46

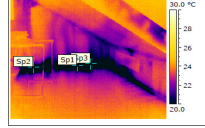

www.co2olbricks.eu
Co₂olBricks

Termopilt ±0 Pa



IR Text Comment	Value
Sisitemperatuur, +°C	24.2
Välisitemperatuur, +°C	3.1
Label	Value
Sp1	14.2 °C
Sp2	16.1 °C
Sp3	15.7 °C
fRsi1	0.53
fRsi2	0.62
fRsi3	0.60

Termopilt -50 Pa



IR Text Comment	Value
Sisitemperatuur, +°C	24.2
Välisitemperatuur, +°C	3.1
Label	Value
Sp1	9.7 °C
Sp2	13.7 °C
Sp3	11.0 °C

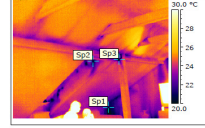

www.co2olbricks.eu
Co₂olBricks

Termopilt ±0 Pa



IR Text Comment	Value
Sisitemperatuur, +°C	24.2
Välisitemperatuur, +°C	3.1
Label	Value
Sp1	21.6 °C
Sp2	21.7 °C
Sp3	25.3 °C
fRsi1	0.87
fRsi2	0.88
fRsi3	1.05

Termopilt -50 Pa



IR Text Comment	Value
Sisitemperatuur, +°C	24.2
Välisitemperatuur, +°C	3.1
Label	Value
Sp1	20.4 °C
Sp2	20.4 °C
Sp3	18.6 °C


www.co2olbricks.eu